

**TOUR CONDITIONS  
(INCLUDED IN TOUR PRICE)**

**PRICE:** Prices quoted are per person and in US dollars and are based on fares and costs in effect at the time of publication. Whenever possible, DWM obtains price guarantees from suppliers. However, depending upon the strength of the US dollar and the fluctuating nature of oil, gas and other costs, published rates are subject to change without notice. CREDIT CARDS may be used for DEPOSIT. If final payment is made by credit card, there will be a convenience fee of \$155. added per person.

**TRANSPORTATION:** Via jet economy class on US Airways. Tickets must be completed 30 days prior to departure. Tickets cannot be changed once issued.

**DEVIATIONS/STOPOVERS:** An individual change in the return date that is a deviation from the basic group itinerary will NOT be allowed.

**HOTELS:** Four & five star hotels throughout. Prices are based on two persons sharing a twin-bedded room with private bath. Single rooms are subject to availability for an additional cost of \$785. **If a passenger cannot supply a roommate and Discovery Worldwide Ministries is unable to do so, or your roommate cancels before departure, the passenger will have to pay the supplemental charge.** (You may be billed after the final payment date for single room accommodations as necessary.)

**MEALS:** Two meals daily: breakfast and full dinners upon arrival in Israel.

**SIGHTSEEING:** Local transportation is by deluxe, air-conditioned motor coach. The services of an English-speaking guide, entrance fees to places visited on sightseeing described in this itinerary are included in tour price.

**AIRPORT TAXES/FUEL:** \$706 (actual cost as of 12/5/13) **NOTE: (Taxes/Fuel Surcharges may change without notice. Any increase will be billed to the passenger and must be paid prior to departure.)**

**(NOT INCLUDED)**

Passport costs; food and beverages (including coffee and tea) not usually included with regular meals; optional tours and excursions not mentioned in this itinerary; accident and baggage insurance; transporting and handling excess luggage; personal tips to guides, drivers and others rendering special services. Tips of \$120 will be included on final invoice. **NOTE: (Taxes/Fuel Surcharges may change without notice. Any increase will be billed to the passenger and must be paid prior to departure.)** In the event it becomes necessary to overnight material due to late receipt of registration or final payments, traveler will be billed for these charges.

**FOR YOUR PROTECTION**

**INSURANCE:** Acting only as agents for suppliers, Discovery Worldwide Ministries is not responsible for damage, loss, or theft of luggage and/or personal belongings, or for personal injury, accident and/or illness. For your own protection, it is important that you have adequate insurance to cover these possibilities. You should carry proof of insurance in the event you need medical attention while in Israel. Upon receipt of your statement, via an email, the link for optional insurance will be provided.

**IMPORTANT INFORMATION  
PLEASE READ CAREFULLY**

**PASSPORT:** A valid passport is required and must be obtained in person by each tour member. No visas are required for Israel. A valid passport is required to leave the USA. It should be valid for a minimum of six months after your return date; you will be denied boarding if your passport is not valid for **six months beyond your return date.**

**REGISTRATION & DEPOSIT:** A deposit of \$500 per person is required at the time of registration. **The deposit may be charged to your VISA, MasterCard or AMERICAN EXPRESS.** Registrations received inside sixty (60) days **must be accompanied by full payment.** A **\$30 LATE REGISTRATION** fee will be assessed.

**PAYMENTS:** After you have registered for a tour, you will receive an invoice with final payment amount and date due. **Final payments** should be made payable to **DISCOVERY WORLDWIDE MINISTRIES** and must be received sixty (60) days prior to departure. Final payments received inside sixty (60) days will be assessed a **\$30 LATE PAYMENT** fee. **NOTE:** ALL reservations not fully paid by the sixty-day deadline are subject to cancellation, for which Tour Operator is not to be held responsible.

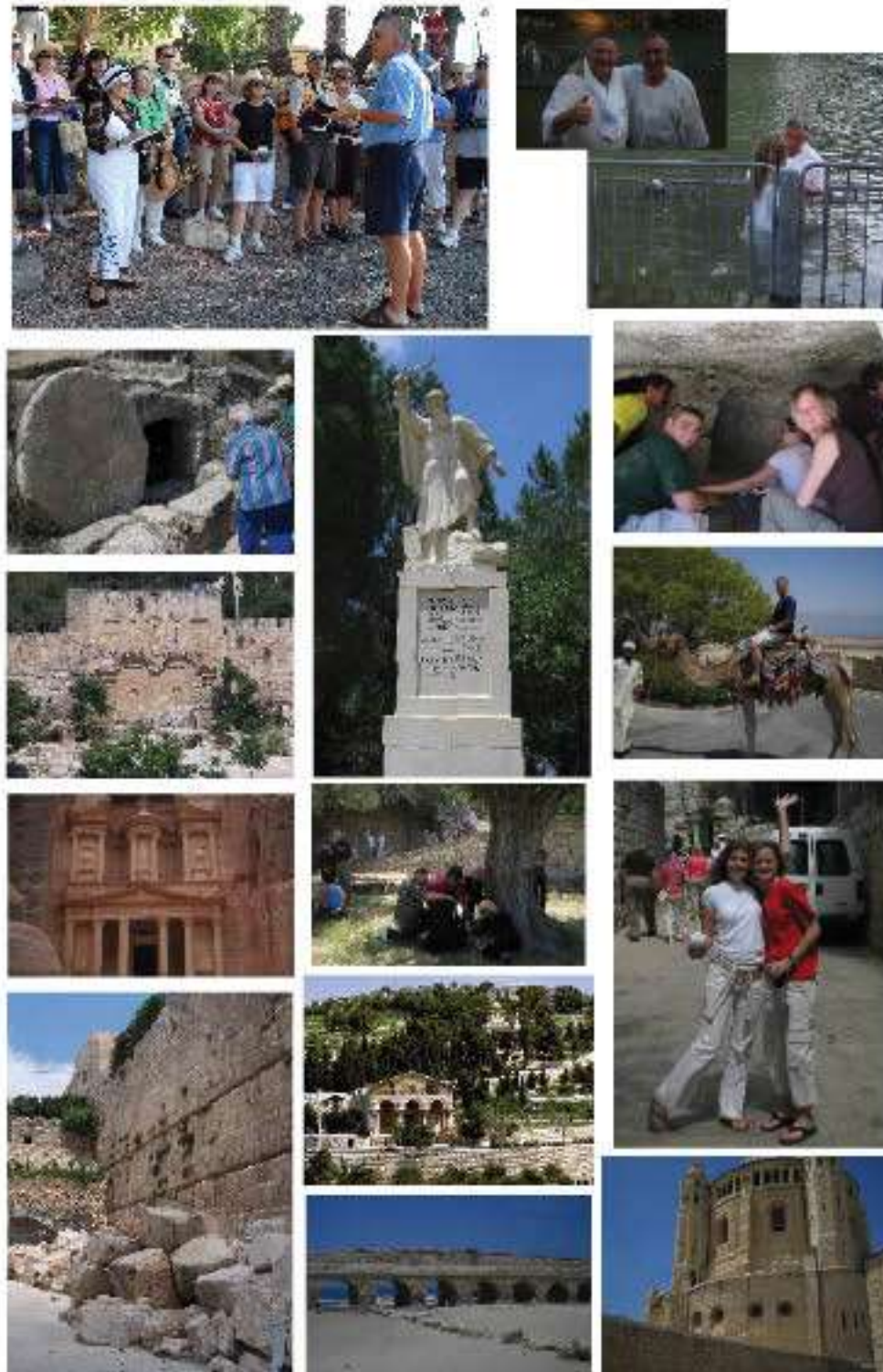
**CANCELLATIONS AND REFUNDS**

If a passenger cancels his/her tour membership for any reason, there will be a cancellation fee of one hundred dollars (\$100) to cover administrative and communication costs. For cancellations from 90-60 days an additional \$100 is charged by the airlines for a total cancellation fee of \$200. Cancellations received 59-31 days prior to departure: 25% of tour cost; 30-15 days: 50%; **NO REFUND for cancellations within fourteen (14) days of departure -- trip cancellation and interruption insurance is available and is highly recommended. All cancellation requests must be addressed to Discovery Worldwide Ministries in writing. Phone calls for cancellations cannot be accepted.**

**TOUR OPERATOR RESPONSIBILITY**

Discovery Worldwide Ministries (Tour Operator) agrees to arrange for the tour described in this brochure. This represents the entire agreement between the passenger and his agent, the Tour Host, the Tour Operator and its agents. Except as stated herein, no person is authorized to cancel, modify, or vary the tour arrangements or to make any representation of warranty concerning the tour. Except for the willful negligence of its direct employees, the Tour Operator assumes no liability or responsibility for any injuries, damages occasioned by circumstances beyond the control of Tour Operator, or by any person for any reason whatsoever, including but not limited to default or omission of and by any third party providing services or facilities related to or included in this tour or any part thereof, or in arranging for the same, or the acts or omissions of the Tour Host. Due to circumstances beyond the Tour Operator's control, the sequence of touring sites may occasionally need to be altered. The airlines or cruise lines are not to be held responsible for any act, omission or event during the time the passengers are not on board planes, ships or conveyances. The passenger contracts, in use by the airlines and cruise lines, and the passenger or purchaser of this tour and/or passage and Tour Operator assume no liability or responsibility in connection therewith. Also, the Tour Operator WILL NOT BE responsible for: (a) flight schedule changes, mechanical breakdowns, government actions, weather, acts of God, acts of war or aggression, whether declared or undeclared, hijackings, or other circumstances beyond its control, including any connecting flights that may be missed as a result thereof (participants should consider the possibility of delays when arranging connecting flights); (b) the failure to follow instructions, including but not limited to check-in and check-out times and baggage handling; and, (c) charges incurred relating to single room/stateroom requirements either by the passengers themselves or their assigned roommates. Payment of the deposit or any partial or full payment for a reservation constitutes consent to all provisions listed in this brochure.

Come and Make Memories  
as we worship and study  
God's Word in His Land.



Operated by Discovery Worldwide Ministries

WALK WHERE JESUS WALKED

ISRAEL  
HOLY LAND TRIP

A TRIP OF  
A LIFETIME!  
Israel



Join  
Dr. David & Brenda George  
For

“THE TRIP OF A LIFETIME”  
10 Exciting Days in Israel!

June 5 - 14, 2014  
\$4319 from Dallas/Fort Worth  
(Plus tips)



**Tour Hosts**  
Dr. David & Brenda George  
First Baptist Church  
Weatherford, TX





Dear Friends,

Words cannot express the excitement we feel preparing to spend these days "Walking Where Jesus Walked". This journey will be educational, informational, but most of all inspirational! We assure you, nothing will do more for your spiritual growth than this time in His Land! The hotels are beautiful, the food is fantastic, and the fellowship will be blessed. Do not miss this "trip of a lifetime"

Dr. David & Brenda George

## GROUP PROGRAM

### DAY 1: - DEPARTURE:

Depart from Dallas/Ft. Worth to Tel Aviv via Philadelphia on US airways.

### DAY 2: - TEL AVIV / NETANYA:

Shabbat Shalom! We arrive in HIS LAND. Upon arrival at Ben Gurion Airport, we will be met and assisted to our motor coach. We proceed to our hotel on the shores of the Mediterranean. (D)

### DAY 3: - CAESAREA / MEGIDDO / TIBERIAS:

Today's sites include the ancient seaport and Roman theater at Caesarea, Mount Carmel, Megiddo and the Valley of Armageddon. We arrive in Tiberias at our hotel overlooking the Sea of Galilee. (B,L,D)

### DAY 4: - SEA OF GALILEE / CAPERNAUM / CAESAREA PHILIPPI:

Today we cross the Sea of Galilee by boat landing at Kibbutz Nof Ginosar where we view the ancient Jesus Boat. We continue to the site of Peter's restoration and the Mt. of the Beatitudes before arriving at Kibbutz En Gev for a lunch of St. Peter's fish. Later we visit Capernaum, Jesus' ministry base with its ancient synagogue. Time permitting we will travel north to Caesarea Philippi and the mouth of the Jordan River. We end our day at the baptismal site on the Jordan River. If you desire to be baptized please bring a swimsuit. (B,L,D)

### DAY 5: - BET SHEAN / EN HAROD / DEAD SEA:

This morning we travel south through the Jordan Valley to the city of Bet Shean. We then visit Gideon's Spring at En Harod before continuing south along the shore of the Dead Sea on the lowest road in the world. We arrive at a beautiful Dead Sea hotel for the balance of the to relax at the hotel pools, Dead Sea spa, mineral pools or to enjoy other special services. Dinner and overnight Dead Sea. (B,L,D)



### DAY 6: - MASADA / QUMRAN / JERUSALEM:

This morning we start early to Masada, truly a remarkable piece of history. We proceed to Qumran, the site where a Bedouin shepherd found the Dead Sea Scrolls in 1947. We then go up to the Holy City of Jerusalem! Enter HIS gates with gladness! Time permitting we will overview Jerusalem from the Mt. of Olives before arriving at our hotel. (B,L,D)

### DAY 7: - JERUSALEM / MOUNT OF OLIVES / GETHSEMANE / OLD CITY:

We begin our day on the top of the Mt. of Olives before taking the Palm Sunday path to the Garden of Gethsemane. We have a very special prayer service in a private garden next to Gethsemane. Later we enter the Old City through the Lion's Gate and visit the famous Church of St. Anne with its rich, deep acoustics and the Pool of Bethesda. We continue to the Sisters of Zion Convent to visit the site of Pilate's Judgment Hall/Antonio Fortress. We continue to the house of Caiaphas. (B,L,D)

### DAY 8: - MODEL CITY / NEW CITY / OLD CITY:

The Scale Model of the Second Temple, the Valley of the Cross and the Knesset are seen before proceeding to the Old City where we enter through the Zion Gate. We visit the Herodian Museum, the Temple Museum, a portion of Hezekiah's wall. We depart the City and drive to the Valley of Elah and a visit to Emmaus before returning to our hotel in Jerusalem. (B,L,D)

### DAY 9: - NEW CITY / OLD CITY / WAILING WALL / TEMPLE MOUNT / SOUTHERN WALL EXCAVATIONS:

Today we visit the Jewish Quarter, Wailing (Western) Wall and Temple Mount where we view the Dome of the Rock, the Al Aksa Mosque and the site where The Temple once stood. (B,L,D)

### DAY 10: - GARDEN TOMB:

Today we visit the Garden Tomb for an exciting time of praise and worship. We will view Golgotha and then tour the Garden itself with a visit to the empty tomb. Time permitting we may visit additional sites before returning to our hotel to freshen up and have dinner before checking out. We arrive at the airport for our overnight flight. (B,L,D)

### DAY 11: - HOME:

This day we arrive in Dallas/Ft. Worth. We will return with memories and new friends to last a lifetime and beyond.

*Please Note - If A Passenger Is Unable To Get On And Off The Bus And Walk Without The Assistance Of Another Individual, The Passenger Must Bring Someone With Them To Assist Them.*

**NOTE: The actual daily itinerary is subject to adjustment at the discretion of the tour operator.**

# REGISTRATION

## A TRIP OF A LIFETIME! Israel

### Registrations Only:

(VISA, MASTERCARD and AMERICAN EXPRESS for deposits)

### Questions:

Dr. David George  
(000) 000-0000

Discovery Worldwide Ministries  
(817) 595-2700

### Registration For Holyland

Complete and Mail With Your Deposit To:

Discovery Worldwide Ministries  
P.O. Box 2148 • Hurst, TX 76053

**Name must be printed as it appears on Passport**

Mr.: \_\_\_\_\_

Passport Number: \_\_\_\_\_

Date of Birth: \_\_\_\_\_

Mrs./Ms.: \_\_\_\_\_

Passport Number: \_\_\_\_\_

Date of Birth: \_\_\_\_\_

Street Address: \_\_\_\_\_

City: \_\_\_\_\_ State: \_\_\_\_\_ Zip: \_\_\_\_\_

Phone: Cell (\_\_\_\_) \_\_\_\_\_ Home (\_\_\_\_) \_\_\_\_\_

E-mail Address: \_\_\_\_\_

Roommate: \_\_\_\_\_

I desire a single room and understand the additional cost of \$785.

**Departure Date:** June 5, 2014  
**Departure City:** Dallas/Ft. Worth  
**Tour Hosts:** Dr. David & Brenda George

I have enclosed my \$500 per person deposit.

I have read and agree to the tour conditions stated in this brochure.

Credit Card: \_\_\_ VISA \_\_\_ MasterCard \_\_\_ American Express

Card Number: \_\_\_\_\_ Exp. Date: \_\_\_\_\_

Signature: \_\_\_\_\_

Please register on line at  
[www.discoveryworldwideministries.com](http://www.discoveryworldwideministries.com)